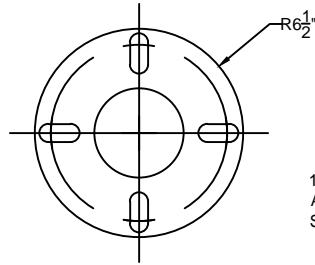
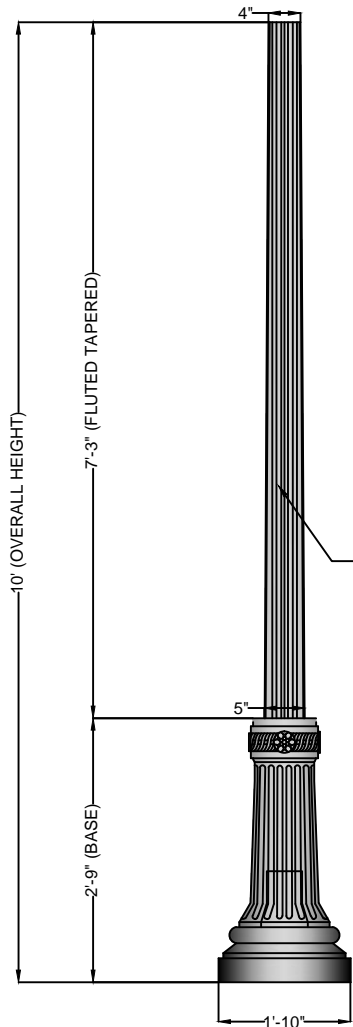


11"- 13" DIA., 3 HOLE  
ANCHOR BOLT CIRCLE  
STANDARD



11"- 13" DIA., 3 HOLE  
ANCHOR BOLT CIRCLE  
STANDARD

**BOLT CIRCLE**  
**SCALE: 1" = 1'-0"** 2



GLOSS BLACK  
POLYURETHANE  
PAINT STANDARD.  
OTHER COLORS &  
POWDERCOATING  
AVAILABLE.

**SIDE VIEW**  
**SCALE: 1/2" = 1'-0"** 1

NOTES

- |                   |          |
|-------------------|----------|
| 1. WIND SPEED     | 120 MPH  |
| 2. WIND LOADING   | 23.25    |
| 3. POLE WEIGHT    | 129 LBS. |
| 4. WALL THICKNESS | 0.125"   |

A	CREATED	JAH	05/18/17
B			
C			
REV:	DESCRIPTION:	BY:	DATE:
AMENDMENTS:			

TITLE: <b>ALUMINUM-TAPERED-FLUTED</b>	SCALE AT A4: 1/2"=1'-0"	DRAWN: JAH	CHECKED: XXX	REVISION: A
SITE: <b>HARRISBURG</b>	PART NO. AATF-1410	PROJECT NO. XX	DATE: 05/18/17	



**MAIN STREET LIGHTING**

1080 INDUSTRIAL PKWY.  
MEDINA, OH 44256  
www.mainstreetlighting.com/