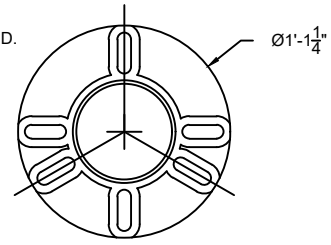
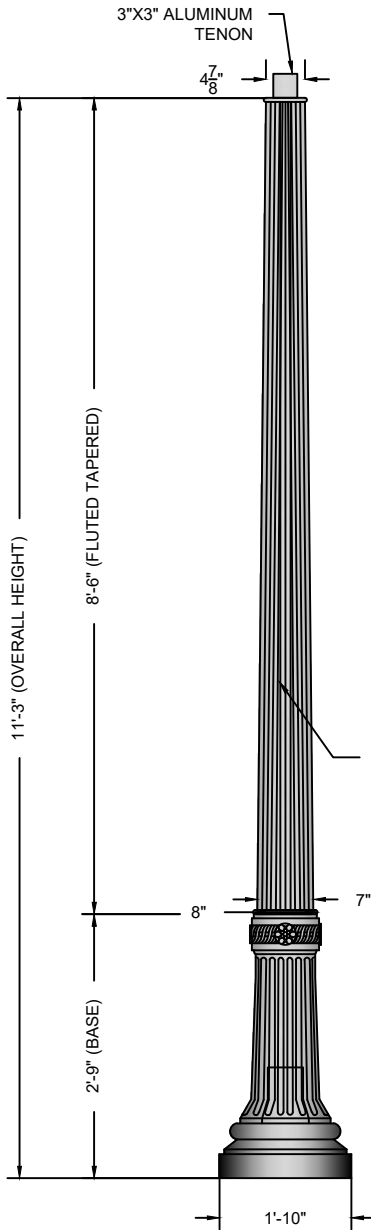


ALUMINUM 6 SLOT UNIVERSAL  
 BASE PLATE. VARIABLE 9 1/2"- 13 1/4"  
 ALUMINUM 6 SLOT UNIVERSAL  
 BOLT CIRCLE. GALVANIZED 5/8" x 18"L  
 ANCHOR BOLTS & TEMPLATE SUPPLIED.



**BOLT CIRCLE**  
**SCALE: 1" = 1'-0"** 2



GLOSS BLACK  
 POLYURETHANE  
 PAINT STANDARD.  
 OTHER COLORS  
 AVAILABLE.

**SIDE VIEW**  
**SCALE: 1/2" = 1'-0"** 1

NOTES

- |                 |          |
|-----------------|----------|
| 1. WIND SPEED   | 120 MPH  |
| 2. WIND LOADING | 4.61     |
| 3. POLE WEIGHT  | 111 LBS. |

A	CREATED	JAH	05/18/17
B			
C			
REV:	DESCRIPTION:	BY:	DATE:

AMENDMENTS:

TITLE:	FIBERGLASS-FLUTED-TAPERED	SCALE AT A4:	1/2"=1'-0"	DRAWN:	JAH	CHECKED:	XXX	REVISION:	A
--------	---------------------------	--------------	------------	--------	-----	----------	-----	-----------	---

STYLE:	HARRISBURG	PART NO.:	AF-1401B	PROJECT NO.:	XX	DATE:	05/18/17
--------	------------	-----------	----------	--------------	----	-------	----------



MAIN STREET LIGHTING

1080 INDUSTRIAL PKWY.  
 MEDINA, OH 44256  
 www.mainstreetlighting.com/