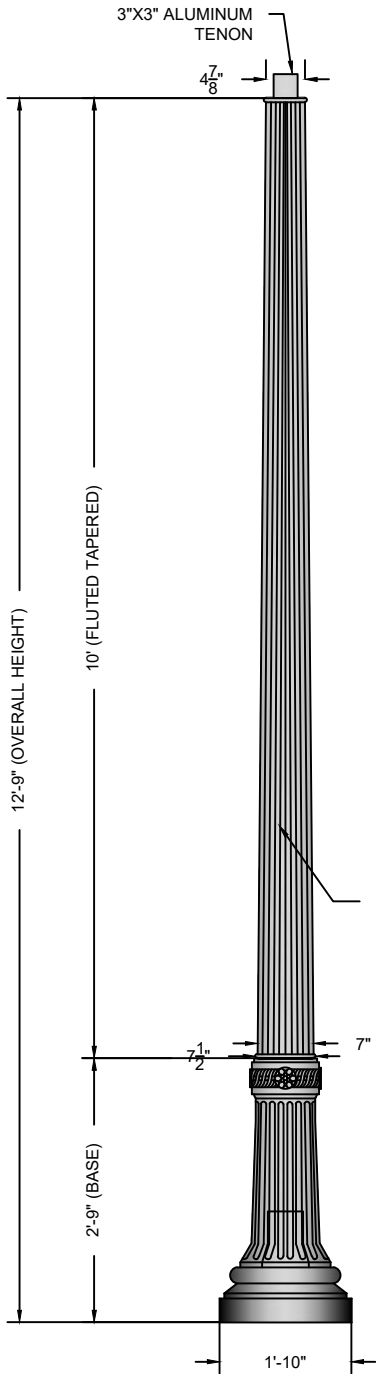
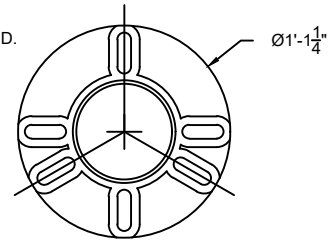


ALUMINUM 6 SLOT UNIVERSAL  
 BASE PLATE. VARIABLE 9 1/2"- 13 1/4"  
 ALUMINUM 6 SLOT UNIVERSAL  
 BOLT CIRCLE. GALVANIZED 5/8" x 18"L  
 ANCHOR BOLTS & TEMPLATE SUPPLIED.



GLOSS BLACK  
 POLYURETHANE  
 PAINT STANDARD.  
 OTHER COLORS  
 AVAILABLE.

**BOLT CIRCLE** 2  
**SCALE: 1" = 1'-0"**

NOTES

- |                 |          |
|-----------------|----------|
| 1. WIND SPEED   | 120 MPH  |
| 2. WIND LOADING | 3.59     |
| 3. POLE WEIGHT  | 115 LBS. |

A	CREATED	JAH	05/18/17
B			
C			
REV:	DESCRIPTION:	BY:	DATE:

**SIDE VIEW** 1  
**SCALE: 1/2" = 1'-0"**

<b>AMENDMENTS:</b>			
SCALE AT A4.	DRAWN.	CHECKED.	REVISION.
1/2"=1'-0"	JAH	XXX	A
PART NO.	PROJECT NO.	DATE.	
AF-1402	XX	05/18/17	

**TITLE:** FIBERGLASS-FLUTED-TAPERED

**STYLE:** HARRISBURG



**MAIN STREET LIGHTING**

1080 INDUSTRIAL PKWY.  
 MEDINA, OH 44256  
[www.mainstreetlighting.com/](http://www.mainstreetlighting.com/)