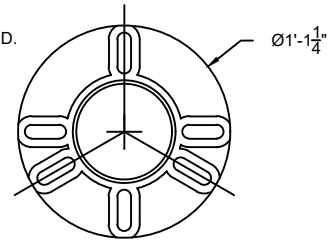
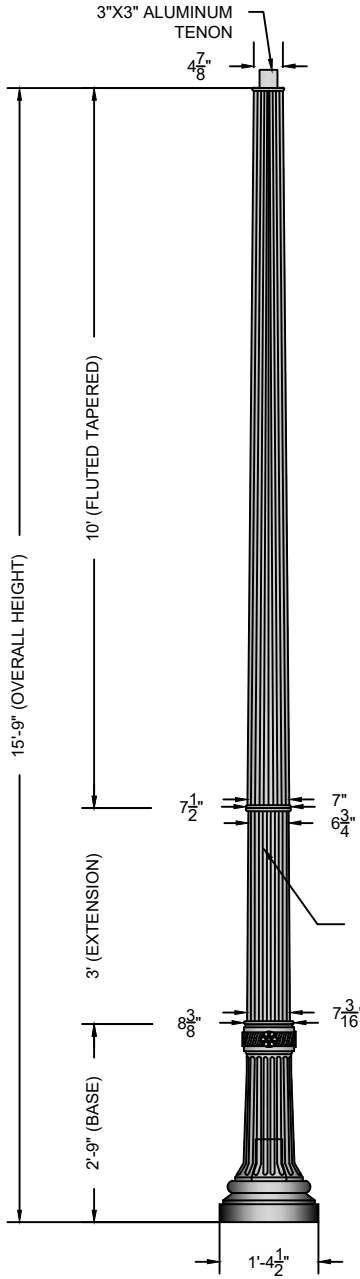


ALUMINUM 6 SLOT UNIVERSAL
 BASE PLATE. VARIABLE 9 1/2"- 13 1/4"
 ALUMINUM 6 SLOT UNIVERSAL
 BOLT CIRCLE. GALVANIZED 3/4" x 18"L
 ANCHOR BOLTS & TEMPLATE SUPPLIED.



BOLT CIRCLE
SCALE: 1" = 1'-0" 2



SIDE VIEW
SCALE: 3/8" = 1'-0" 1

GLOSS BLACK
 POLYURETHANE
 PAINT STANDARD.
 OTHER COLORS
 AVAILABLE.

NOTES

- 1. WIND SPEED 120 MPH
- 2. WIND LOADING 1.86
- 3. POLE WEIGHT 145 LBS.

A	CREATED	JAH	05/18/17
B			
C			
REV:	DESCRIPTION:	BY:	DATE:

AMENDMENTS:

TITLE:	FIBERGLASS-FLUTED-TAPERED	SCALE AT A4: 3/8"=1'-0"	DRAWN: JAH	CHECKED: XXX	REVISION: A
--------	---------------------------	----------------------------	---------------	-----------------	----------------

STYLE:	HARRISBURG	PART NO. AF-1406	PROJECT NO. XX	DATE: 05/18/17
--------	------------	---------------------	-------------------	-------------------



MAIN STREET LIGHTING

1080 INDUSTRIAL PKWY.
 MEDINA, OH 44256
 www.mainstreetlighting.com/