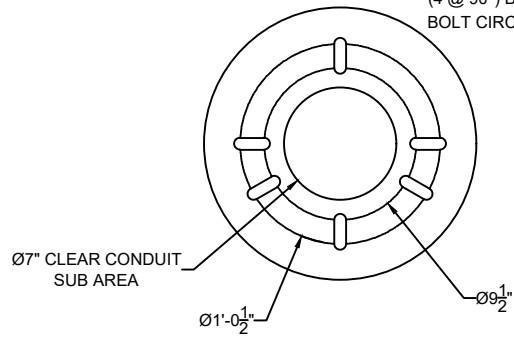
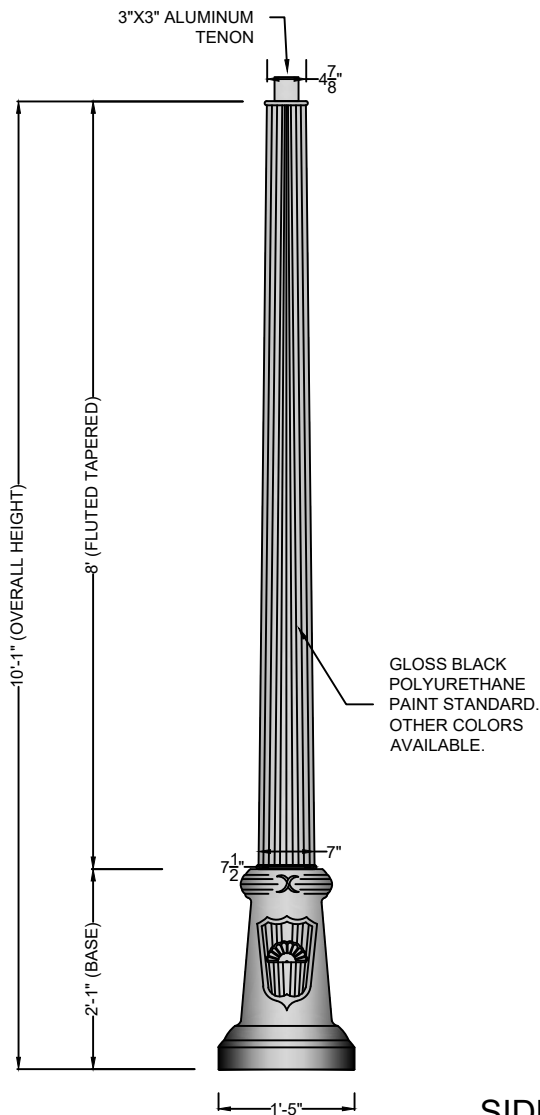


6-SLOT UNIVERSAL (3 @ 120°) OR
 (4 @ 90°) BOLT VARIABLE; 9 1/2" - 12 1/2"
 BOLT CIRCLE TO ACCOMMODATE 3/8"
 Ø ANCHOR BOLTS



BOLT CIRCLE
 SCALE: 1" = 1'-0" 2



SIDE VIEW
 SCALE: 1/2" = 1'-0" 1

NOTES

- 1. WIND SPEED 120 MPH
- 2. WIND LOADING 5.91
- 3. POLE WEIGHT 104 LBS.

REV:	DESCRIPTION:	BY:	DATE:

AMENDMENTS:

TITLE: FIBERGLASS-FLUTED-TAPERED	SCALE AT A4. 1/2"=1'-0"	DRAWN. JAH	CHECKED. XXX	REVISION. A
-------------------------------------	----------------------------	---------------	-----------------	----------------

STYLE: OAK-HARBOR	PART NO. FF1101A	PROJECT NO. XX	DATE. 05/18/17
----------------------	---------------------	-------------------	-------------------



MAIN STREET LIGHTING

1080 INDUSTRIAL PKWY.
 MEDINA, OH 44256
 www.mainstreetlighting.com/