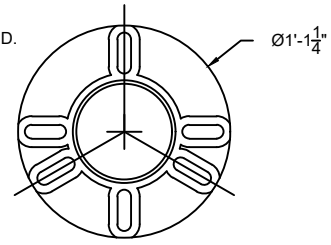
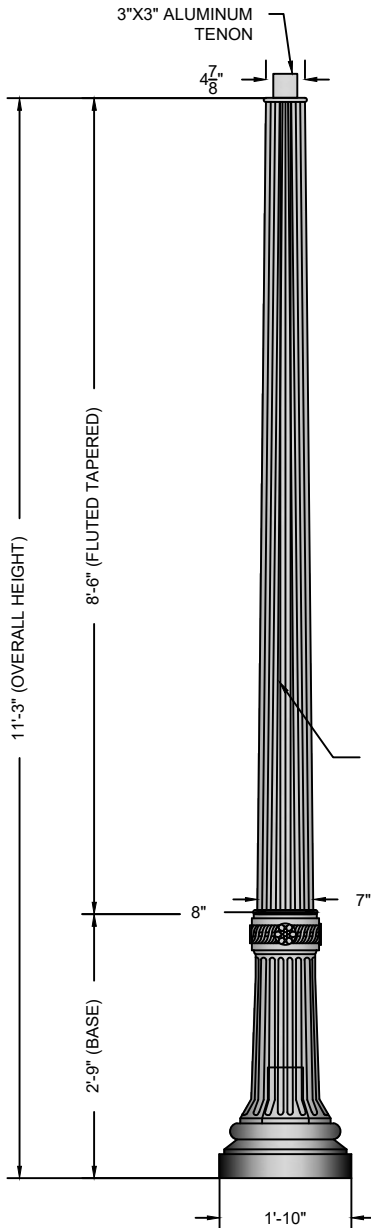


ALUMINUM 6 SLOT UNIVERSAL
 BASE PLATE. VARIABLE 9 1/2"- 13 1/4"
 ALUMINUM 6 SLOT UNIVERSAL
 BOLT CIRCLE. GALVANIZED 3/4" x 18"L
 ANCHOR BOLTS & TEMPLATE SUPPLIED.



BOLT CIRCLE
SCALE: 1" = 1'-0" 2



GLOSS BLACK
 POLYURETHANE
 PAINT STANDARD.
 OTHER COLORS
 AVAILABLE.

SIDE VIEW
SCALE: 1/2" = 1'-0" 1

NOTES

- | | |
|-----------------|----------|
| 1. WIND SPEED | 120 MPH |
| 2. WIND LOADING | 4.61 |
| 3. POLE WEIGHT | 111 LBS. |

A	CREATED	JAH	05/18/17
B			
C			
REV:	DESCRIPTION:	BY:	DATE:

AMENDMENTS:

TITLE:	FIBERGLASS-FLUTED-TAPERED	SCALE AT A4:	1/2"=1'-0"	DRAWN:	JAH	CHECKED:	XXX	REVISION:	A
--------	---------------------------	--------------	------------	--------	-----	----------	-----	-----------	---

STYLE:	HARRISBURG	PART NO.:	FF-1401B	PROJECT NO.:	XX	DATE:	05/18/17
--------	------------	-----------	----------	--------------	----	-------	----------



MAIN STREET LIGHTING

1080 INDUSTRIAL PKWY.
 MEDINA, OH 44256
 www.mainstreetlighting.com/