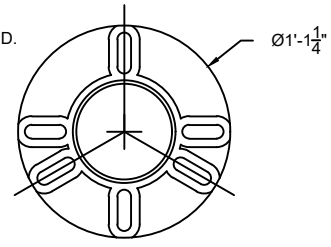
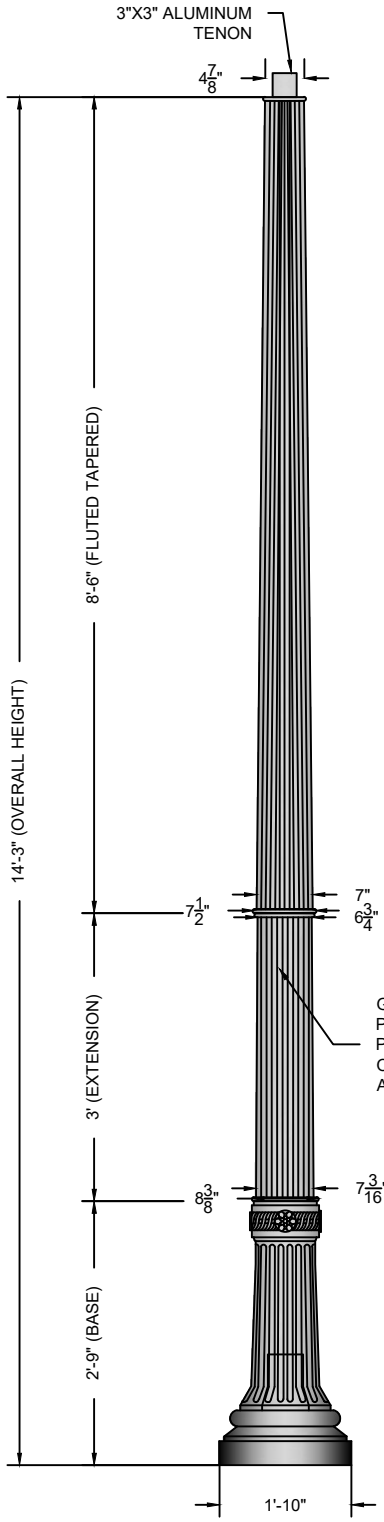


ALUMINUM 6 SLOT UNIVERSAL
 BASE PLATE. VARIABLE 9 1/2"- 13 1/4"
 ALUMINUM 6 SLOT UNIVERSAL
 BOLT CIRCLE. GALVANIZED 5/8" x 18"L
 ANCHOR BOLTS & TEMPLATE SUPPLIED.



BOLT CIRCLE
SCALE: 1" = 1'-0" 2



GLOSS BLACK
 POLYURETHANE
 PAINT STANDARD.
 OTHER COLORS
 AVAILABLE.

NOTES

- 1. WIND SPEED 120 MPH
- 2. WIND LOADING 2.98
- 3. POLE WEIGHT 139 LBS.

SIDE VIEW
SCALE: 1/2" = 1'-0" 1

A	CREATED	JAH	05/18/17
B			
C			
REV:	DESCRIPTION:	BY:	DATE:

AMENDMENTS:			
SCALE AT A4.	DRAWN.	CHECKED.	REVISION.
1/2"=1'-0"	JAH	XXX	A
PART NO.	PROJECT NO.	DATE.	
FF-1403	XX	05/18/17	

TITLE: **FIBERGLASS-FLUTED-TAPERED**

STYLE: **HARRISBURG**



MAIN STREET LIGHTING

1080 INDUSTRIAL PKWY.
 MEDINA, OH 44256
www.mainstreetlighting.com/