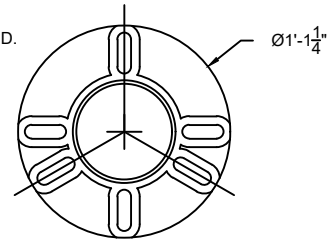
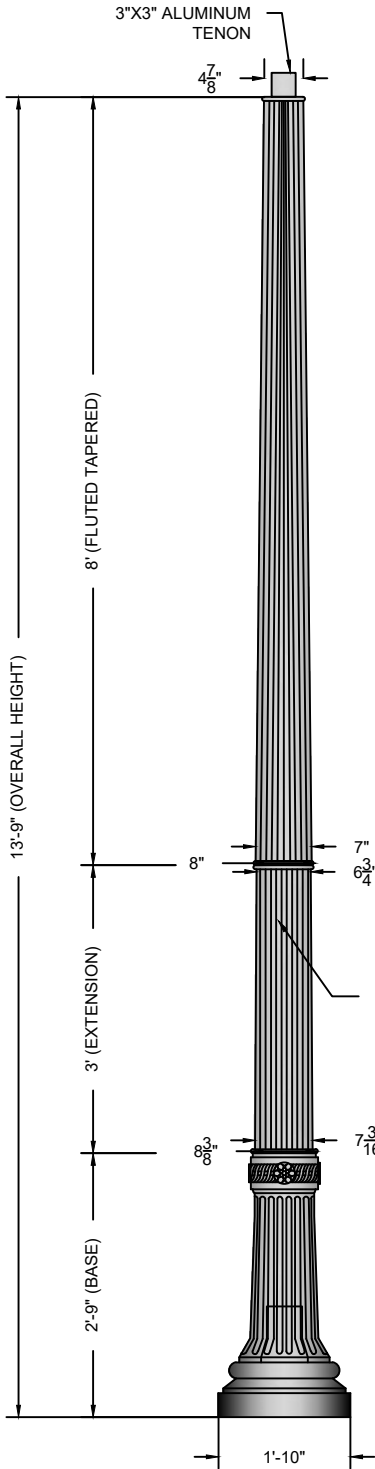


ALUMINUM 6 SLOT UNIVERSAL  
 BASE PLATE. VARIABLE 9 1/2"- 13 1/4"  
 ALUMINUM 6 SLOT UNIVERSAL  
 BOLT CIRCLE. GALVANIZED 5/8" x 18"L  
 ANCHOR BOLTS & TEMPLATE SUPPLIED.



**BOLT CIRCLE** 2  
**SCALE: 1" = 1'-0"**



GLOSS BLACK  
 POLYURETHANE  
 PAINT STANDARD.  
 OTHER COLORS  
 AVAILABLE.

**NOTES**

1. WIND SPEED 120 MPH
2. WIND LOADING 2.69
3. POLE WEIGHT 138 LBS.

**SIDE VIEW** 1  
**SCALE: 1/2" = 1'-0"**

A	CREATED	JAH	05/18/17
B			
C			
REV:	DESCRIPTION:	BY:	DATE:

AMENDMENTS:			
SCALE AT A4.	DRAWN.	CHECKED.	REVISION.
1/2"=1'-0"	JAH	XXX	A
PART NO.	PROJECT NO.	DATE.	
FF-1405	XX	05/18/17	

TITLE:	FIBERGLASS-FLUTED-TAPERED
STYLE:	HARRISBURG



**MAIN STREET LIGHTING**

1080 INDUSTRIAL PKWY.  
 MEDINA, OH 44256  
[www.mainstreetlighting.com/](http://www.mainstreetlighting.com/)